

# Wall Cabinets W3036

Code Width Height

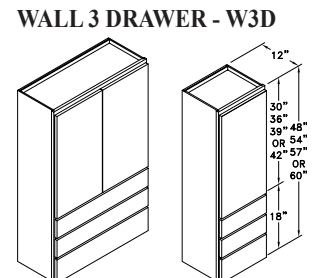
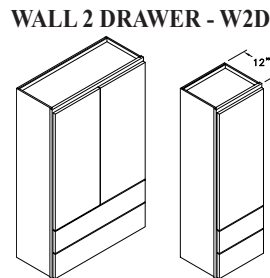
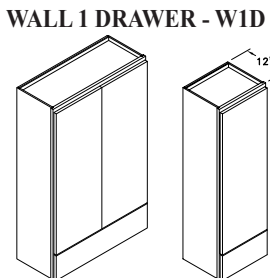
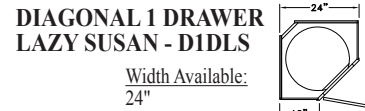
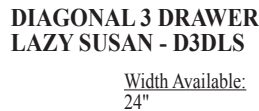
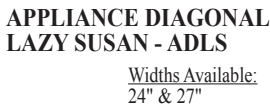
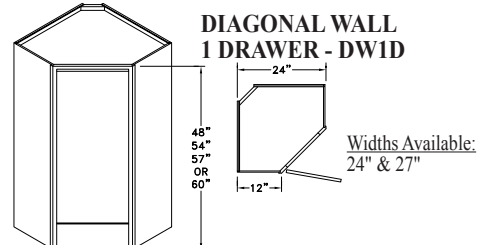
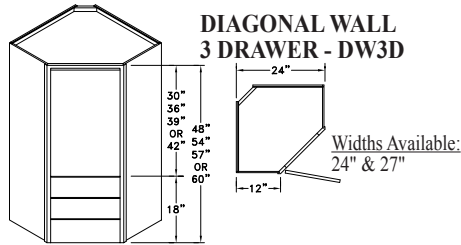
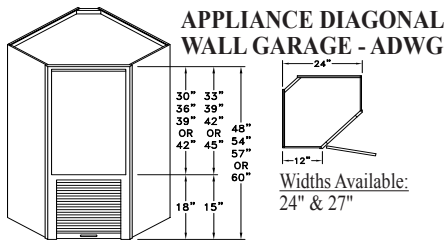
•Standard Wall cabinet depth is 12" unless otherwise specified.  
 •Most 24" wide Wall cabinets are available with 1 or 2 doors. i.e. W2430-1 or W2430-2.

<p><b>WALL CABINET - W</b></p> <p>Heights Available: 12", 15", 18", 21", 24", 27", 30", 33", 36", 39", 42", 45" &amp; 48"</p> <p>Widths Available: 9", 12", 15", 18", 21" 24"-1, 24"-2, 27", 30", 33", 36", 39", 42", 45" &amp; *48" (*Most heights in a 48" wide wall also available w/ 4 doors.)</p> <p>Most sizes also available in Peninsula. Specify Peninsula Wall Cabinet - PWC.</p>	<p><b>SPLIT WALL CABINET - SW</b></p> <p>Heights Available: 42", 45" &amp; 48"</p> <p>Widths Available: 9", 12", 15", 18", 21", 24"-1, 24"-2, 27", 30", 33", 36", 39", 42", 45" &amp; *48" (*Most heights in a 48" wide wall also available w/ 4 doors.)</p>	<p><b>WALL 48 W/ 3 DOORS - W3DR</b></p> <p>Heights Available: 12", 15", 18", 24" &amp; 30"</p>			
<p><b>BLIND CORNER WALL - XCW</b></p> <p>Heights Available: 24", 30", 33", 36", 39", 42", 45" &amp; 48"</p> <p>Widths Available: 24", 27", 30", 33", 36", 39", 42", 45" &amp; 48"</p> <p>*Also available in Peninsula. Specify Peninsula Blind Corner - PXCW.</p>	<p><b>SPLIT BLIND CORNER WALL - SXCW</b></p> <p>Heights Available: 42", 45" &amp; 48"</p> <p>Widths Available: 24", 27", 30", 33", 36", 39", 42", 45" &amp; 48"</p>	<p><b>WALL RADIUS END CABINET - WRE</b></p> <p>Heights Available: 30", 33", 36", 39", 42", 45" &amp; 48"</p>	<p><b>WALL DIAGONAL END CABINET - WDE</b></p> <p>Heights Available: 30", 33", 36", 39", 42", 45" &amp; 48"</p>	<p><b>WALL ANGLE END CABINET - WAE</b></p> <p>Heights Available: 30", 33", 36", 39", 42", 45" &amp; 48"</p>	
<p><b>CORNER WALL CABINET - CW</b></p> <p>Heights Available: 24", 27", 30", 33", 36", 39", 42", 45" &amp; 48"</p> <p>Widths Available: 21" &amp; 24"</p> <p>*Also available in Peninsula (24" wide). Specify Peninsula Corner Wall - PCW.</p>	<p><b>CORNER WALL DUAL HINGE - CWDH</b></p> <p>Heights Available: 24", 27", 30", 33", 36", 39", 42", 45" &amp; 48"</p> <p>Widths Available: 21" &amp; 24"</p>	<p><b>ASYMMETRICAL CORNER WALL - CWA</b></p> <p>Heights Available: 24", 27", 30", 33", 36", 39", 42", 45" &amp; 48"</p> <p>*Also available in Peninsula. Specify Peninsula Asymmetrical Corner Wall - PCWA</p>			
<p><b>DIAGONAL WALL CABINET - DW</b></p> <p>Heights Available: 24", 27", 30", 33", 36", 39", 42", 45" &amp; 48"</p> <p>Widths Available: 24" &amp; 27"</p> <p>*Also available in Peninsula. Specify Peninsula Diagonal Wall - PDW or PDL.</p>	<p><b>SPLIT DIAGONAL WALL - SDW</b></p> <p>Heights Available: 42", 45" &amp; 48"</p> <p>Widths Available: 24" &amp; 27"</p>	<p><b>DIAGONAL WALL WIRE LAZY SUSAN - DWWLS</b></p> <p>Width Available: 24"</p>	<p><b>WALL RADIUS CORNER SHELF - WRCS</b></p> <p>Heights Available: 30", 33", 36", 39", 42", 45" &amp; 48"</p>		
<p><b>DIAGONAL LAZY SUSAN - DLS</b></p> <p>Heights Available: 24", 27", 30", 33", 36", 39", 42", 45" &amp; 48"</p> <p>Widths Available: 24" &amp; 27"</p>	<p><b>SPLIT DIAGONAL LAZY SUSAN - SDLS</b></p> <p>Heights Available: 42", 45" &amp; 48"</p>	<p><b>DIAGONAL WALL WIRE LAZY SUSAN - DWWLS</b></p> <p>Width Available: 24"</p>	<p><b>RADIUS WALL CORNER - RWC</b></p> <p>Heights Available: 30", 33", 36", 39", 42", 45" &amp; 48"</p>		
<p><b>APPLIANCE WALL GARAGE - AWG</b></p> <p>Widths Available: 15", 18", 21", 24-1", 24-2", 27", 30", 33" &amp; 36"</p>	<p><b>BLIND APPLIANCE CORNER WALL - XACW</b></p> <p>Widths Available: 27", 30", 33" &amp; 36"</p>	<p><b>APPLIANCE WALL FLIP DOOR - AWFD</b></p> <p>Widths Available: 21", 24-1", 24-2", 27", 30", 33" &amp; 36"</p>	<p><b>BLIND APPLIANCE CORNER FLIP DOOR - XACFD</b></p> <p>Widths Available: 27", 30", 33" &amp; 36"</p>	<p><b>RADIUS WALL CORNER - RWC</b></p> <p>Heights Available: 30", 33", 36", 39", 42", 45" &amp; 48"</p>	
<p><b>APPLIANCE GARAGE - AG</b></p> <p>Widths Available: 15", 18", 21", 24", 27", 30", 33" &amp; 36"</p>	<p><b>APPLIANCE GARAGE DIAGONAL - AGD</b></p> <p>Widths Available: 24" &amp; 27"</p>	<p><b>APPLIANCE GARAGE FLIP DOOR - AGFD</b></p> <p>Widths Available: 21", 24", 27", 30", 33" &amp; 36"</p>	<p><b>1 DRAWER STACK - 1DS</b></p> <p>Widths Available: 15", 18", 21", 24", 27", 30", 33" &amp; 36"</p>	<p><b>2 DRAWER STACK - 2DS</b></p> <p>Widths Available: 15", 18", 21", 24", 27", 30", 33" &amp; 36"</p>	<p><b>3 DRAWER STACK - 3DS</b></p> <p>Widths Available: 15", 18", 21", 24", 27", 30", 33" &amp; 36"</p>

# Wall Cabinets W3036

Code Width Height

•Standard Wall cabinet depth is 12" unless otherwise specified.  
 •Most 24" wide Wall cabinets are available with 1 or 2 doors. i.e. W2430-1 or W2430-2.



Widths Available:  
15", 18", 21",  
24-1", 24-2", 27",  
30", 33" & 36"

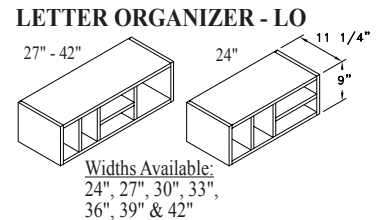
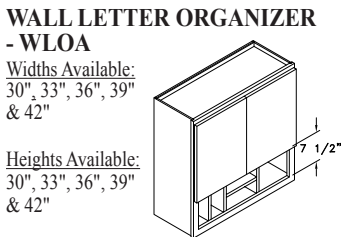
Heights Available:  
48", 54", 57" & 60"

Widths Available:  
15", 18", 21",  
24-1", 24-2", 27",  
30", 33" & 36"

Heights Available:  
48", 54", 57" & 60"

Widths Available:  
15", 18", 21",  
24-1", 24-2", 27",  
30", 33" & 36"

Heights Available:  
48", 54", 57" & 60"



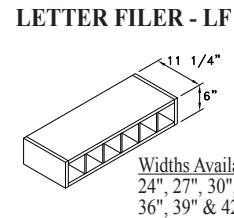
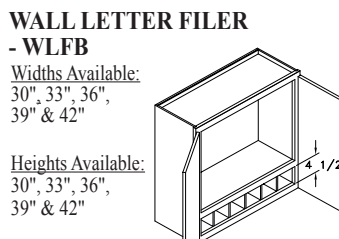
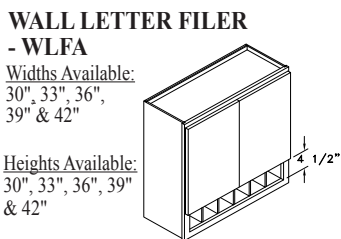
Widths Available:  
30", 33", 36", 39"  
& 42"

Heights Available:  
30", 33", 36", 39"  
& 42"

Widths Available:  
30", 33", 36", 39"  
& 42"

Heights Available:  
30", 33", 36", 39"  
& 42"

Widths Available:  
24", 27", 30", 33",  
36", 39" & 42"



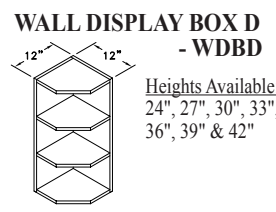
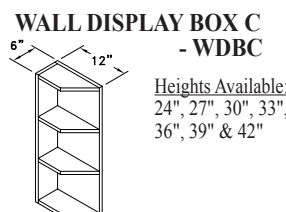
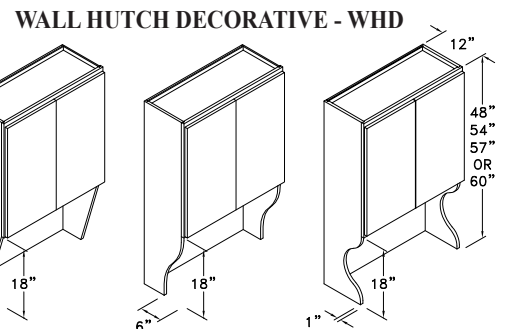
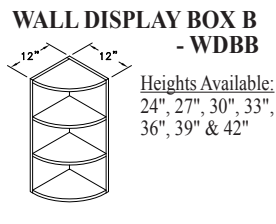
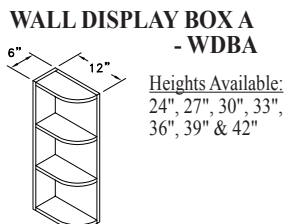
Widths Available:  
30", 33", 36",  
39" & 42"

Heights Available:  
30", 33", 36", 39"  
& 42"

Widths Available:  
30", 33", 36",  
39" & 42"

Heights Available:  
30", 33", 36",  
39" & 42"

Widths Available:  
24", 27", 30", 33",  
36", 39" & 42"



Heights Available:  
24", 27", 30", 33",  
36", 39" & 42"

Heights Available:  
24", 27", 30", 33",  
36", 39" & 42"

Heights Available:  
18", 48", 54", 57",  
OR 60"

Widths Available:  
30", 36" & 42"

Heights Available:  
24", 27", 30", 33",  
36", 39" & 42"

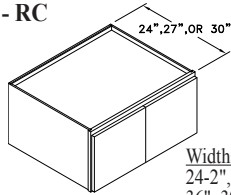
Heights Available:  
24", 27", 30", 33",  
36", 39" & 42"

# Wall Cabinets W3036

Code Width Height

- Standard Wall cabinet depth is 12" unless otherwise specified.
- Most 24" wide Wall cabinets are available with 1 or 2 doors. i.e. W2430-1 or W2430-2.

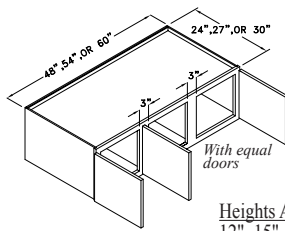
## REFRIGERATOR CABINET - RC



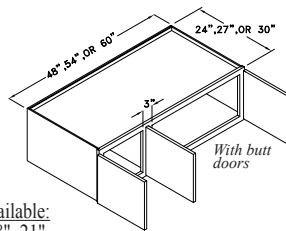
**Widths Available:**  
24-2", 27", 30", 33",  
36", 39", 42" & 48"

**Heights Available:**  
12", 15", 18", 21",  
24" & 27"

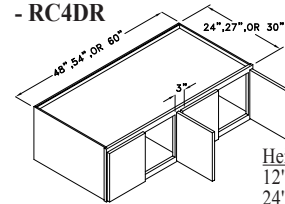
## REFRIGERATOR CABINET 3 DOOR - RC3DR



**Heights Available:**  
12", 15", 18", 21",  
24" & 27"

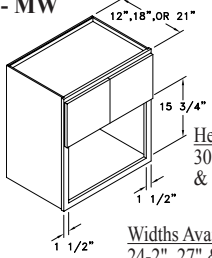


## REFRIGERATOR CABINET 4 DOOR - RC4DR



**Heights Available:**  
12", 15", 18", 21",  
24" & 27"

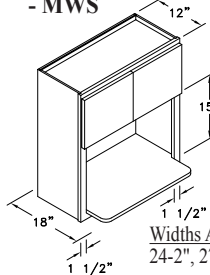
## MICROWAVE WALL - MW



**Heights Available:**  
30", 33", 36", 39"  
& 42"

**Widths Available:**  
24-2", 27" & 30"

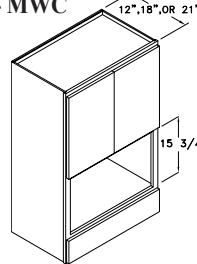
## MICRO. WALL SHELF - MWS



**Heights Available:**  
30", 33",  
36", 39",  
& 42"

**Widths Available:**  
24-2", 27" & 30"

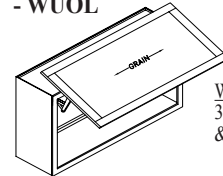
## MICRO. WALL COUNTER CAB'T - MWC



**Heights Available:**  
48", 54",  
57" & 60"

**Widths Available:**  
24-2", 27"  
& 30"

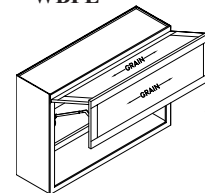
## WALL UP & OVER LIFT CABINET - WUOL



**Heights Available:**  
15", 18", 21" & 24"

**Widths Available:**  
30", 33", 36", 39"  
& 42"

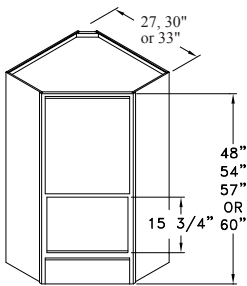
## WALL BI-FOLD LIFT CABINET - WBFL



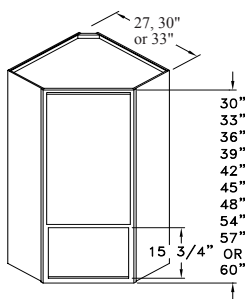
**Heights Available:**  
30", 36"  
& 42"

**Widths Available:**  
30", 33", 36", 39"  
& 42"

## DIAGONAL MICROWAVE WALL W/ DRW. - DMD

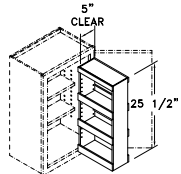


## DIAGONAL MICROWAVE COUNTER CABINET - DMC

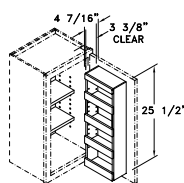


# Wall Accessories

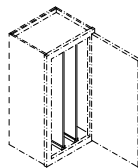
## SWING OUT SPICE RACK - SOSR



## SPICE RACK - SR



## TRAY PARTITIONS - TP

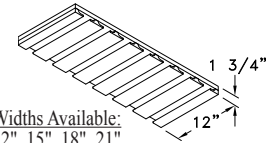


## CUP PEGS - CP



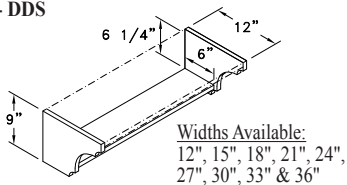
**Widths Available:**  
15", 18", 21", 24",  
27", 30", 33", 36",  
39", 42", 45" & 48"

## GLASS RACK - GR

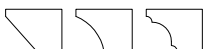


**Widths Available:**  
12", 15", 18", 21",  
24", 27", 30", 33",  
36", 39", 42", 45" & 48"

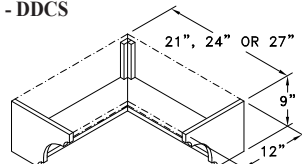
## DECORATIVE DISPLAY SHELF - DDS



**Widths Available:**  
12", 15", 18", 21", 24",  
27", 30", 33" & 36"



## DECORATIVE DISPLAY CORNER SHELF - DDCS



**Widths Available:**  
21", 24" & 27"



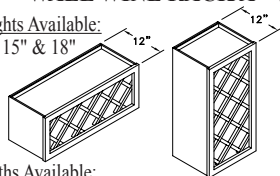
# Wall Cabinets W3036

Code Width Height

•Standard Wall cabinet depth is 12" unless otherwise specified.  
 •Most 24" wide Wall cabinets are available with 1 or 2 doors. i.e. W2430-1 or W2430-2.

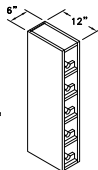
## WALL WINE RACK A - WRA

Heights Available:  
12", 15" & 18"



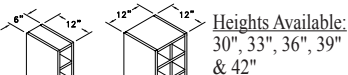
Widths Available:  
24", 27", 30", 33" & 36"

## WALL WINE RACK - WRB



Heights Available:  
30", 33", 36", 39" & 42"

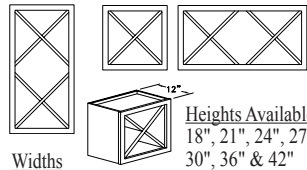
## WALL WINE RACK C - WRC



Heights Available:  
30", 33", 36", 39" & 42"

Widths Available:  
24", 30" & 36"

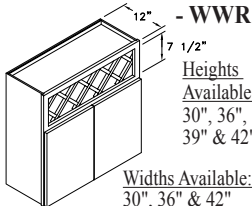
## WALL WINE RACK X - WRX



Heights Available:  
18", 21", 24", 27", 30", 36" & 42"

Widths Available:  
18", 21", 24", 27", 30", 36" & 42"

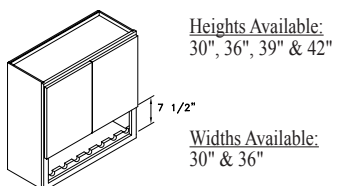
## WALL W/ WINE RACK - WWR



Heights Available:  
30", 36", 39" & 42"

Widths Available:  
30", 36" & 42"

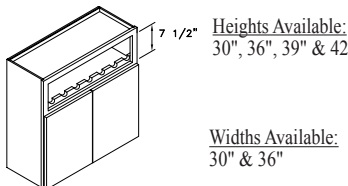
## WINE RACK COMBO A - WRCA



Heights Available:  
30", 36", 39" & 42"

Widths Available:  
30" & 36"

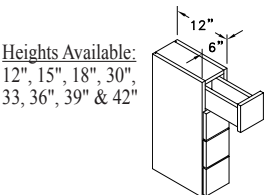
## WINE RACK COMBO B - WRCB



Heights Available:  
30", 36", 39" & 42"

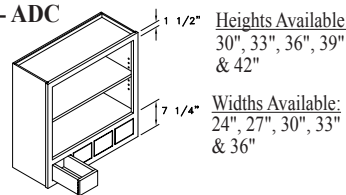
Widths Available:  
30" & 36"

## VERT. APOTHECARY DRAWERS - VAPOTH



Heights Available:  
12", 15", 18", 30", 33", 36", 39" & 42"

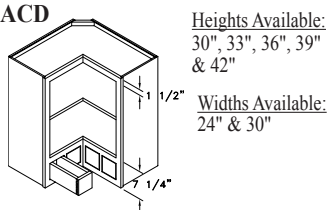
## \*APOTHECARY DISPLAY CABINET - ADC



Heights Available:  
30", 33", 36", 39" & 42"

Widths Available:  
24", 27", 30", 33" & 36"

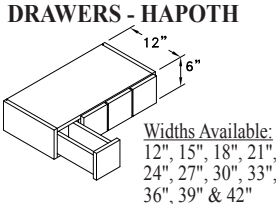
## \*APOTHECARY CORNER DISPLAY - ACD



Heights Available:  
30", 33", 36", 39" & 42"

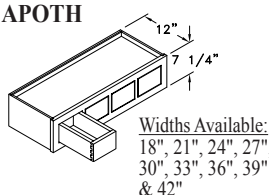
Widths Available:  
24" & 30"

## HORIZ. APOTHECARY DRAWERS - HAPOTH



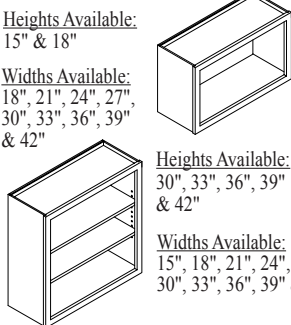
Widths Available:  
12", 15", 18", 21", 24", 27", 30", 33", 36", 39" & 42"

## APOTHECARY DRAWERS - APOTH



Widths Available:  
18", 21", 24", 27", 30", 33", 36", 39" & 42"

## \*WALL DISPLAY CABINET - WDC



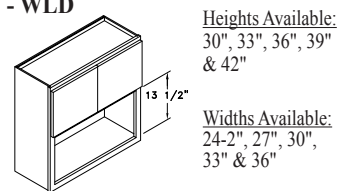
Heights Available:  
15" & 18"

Widths Available:  
18", 21", 24", 27", 30", 33", 36", 39" & 42"

Heights Available:  
30", 33", 36", 39" & 42"

Widths Available:  
15", 18", 21", 24", 27", 30", 33", 36", 39" & 42"

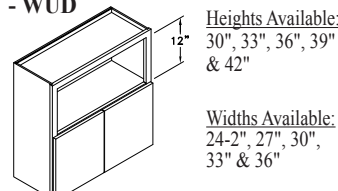
## \*WALL LOWER DISPLAY - WLD



Heights Available:  
30", 33", 36", 39" & 42"

Widths Available:  
24-2", 27", 30", 33" & 36"

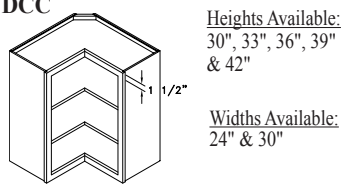
## \*WALL UPPER DISPLAY - WUD



Heights Available:  
30", 33", 36", 39" & 42"

Widths Available:  
24-2", 27", 30", 33" & 36"

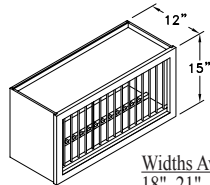
## \*WALL DISPLAY CORNER CABINET - WDCC



Heights Available:  
30", 33", 36", 39" & 42"

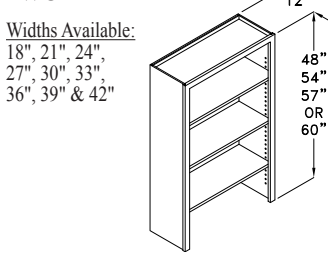
Widths Available:  
24" & 30"

## PLATE RACK - PR



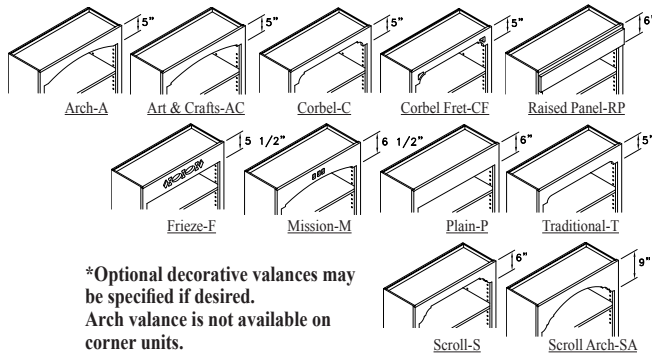
Widths Available:  
18", 21", 24", 27", 30", 33", 36", 39", 42" & 48"

## \*WALL OPEN DISPLAY - WOD



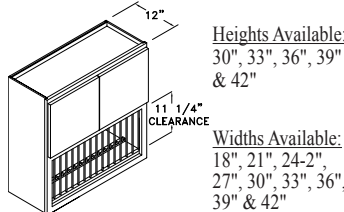
Widths Available:  
18", 21", 24", 27", 30", 33", 36", 39" & 42"

48"  
54"  
57"  
OR  
60"



\*Optional decorative valances may be specified if desired.  
 Arch valance is not available on corner units.

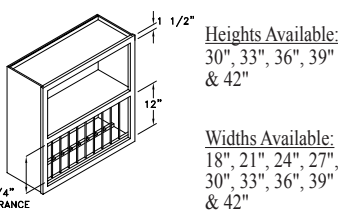
## PLATE RACK WALL CABINET - PRW



Heights Available:  
30", 33", 36", 39" & 42"

Widths Available:  
18", 21", 24-2", 27", 30", 33", 36", 39" & 42"

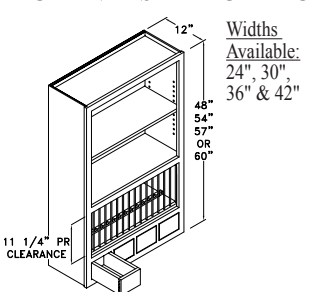
## \*PLATE RACK DISPLAY - PRD



Heights Available:  
30", 33", 36", 39" & 42"

Widths Available:  
18", 21", 24", 27", 30", 33", 36", 39" & 42"

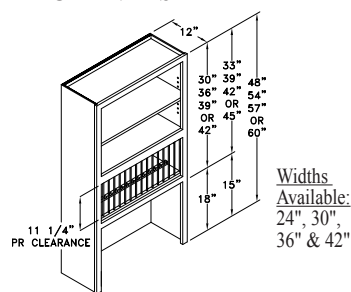
## \*PLATE RACK COUNTER CABINET STYLE C - PR-C



Widths Available:  
24", 30", 36" & 42"

11 1/4" PR CLEARANCE

## \*PLATE RACK COUNTER CABINET STYLE A - PR-A



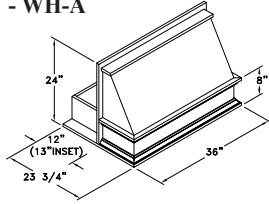
Widths Available:  
24", 30", 36" & 42"

11 1/4" PR CLEARANCE

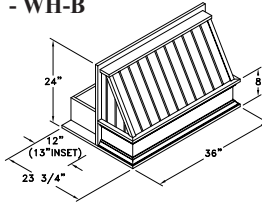
# Wood Hoods

•Stainless Steel Vent-A-Hood® liner inserts, complete with blowers, lights, switches and canopy are available.

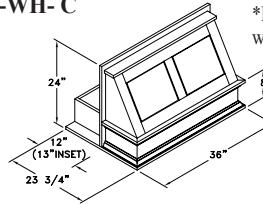
**WOOD HOOD STYLE A - WH-A**



**WOOD HOOD STYLE B - WH-B**

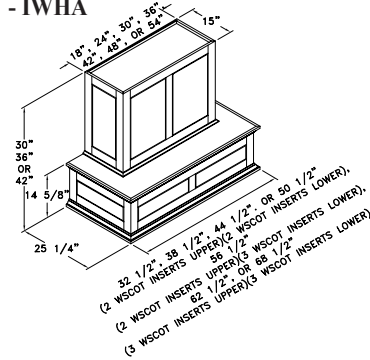


**\*WOOD HOOD STYLE C - WH-C**

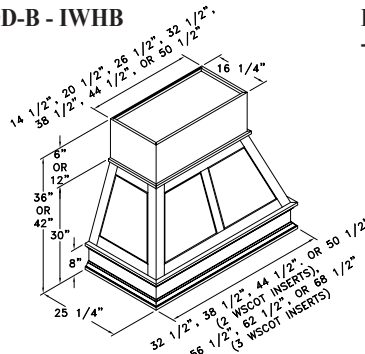
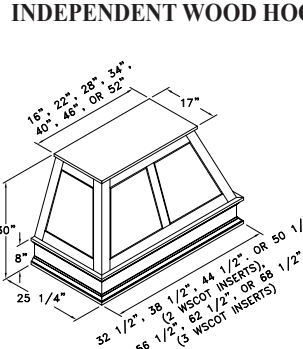


\*Hood-C available with an option of wainscot or doors (wainscot shown).

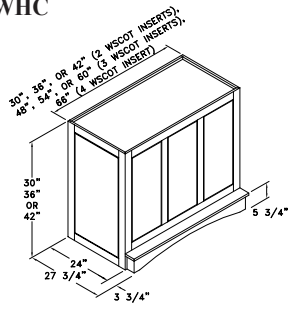
**INDEPENDENT WOOD HOOD-A - IWHA**



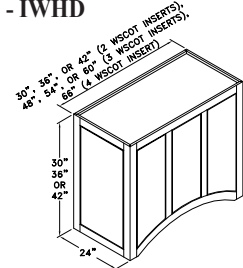
**INDEPENDENT WOOD HOOD-B - IWHB**



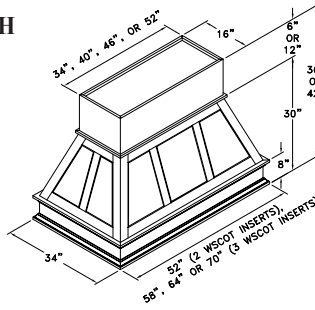
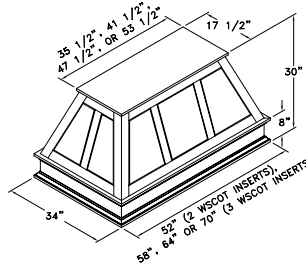
**INDEPENDENT WOOD HOOD-C - IWHC**



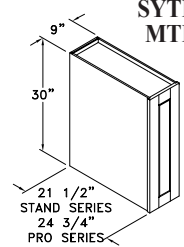
**INDEPENDENT WOOD HOOD-D - IWHD**



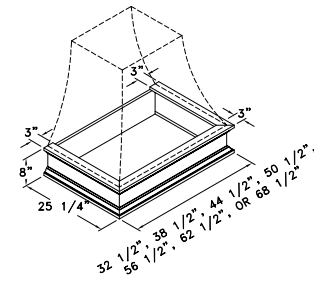
**ISLAND WOOD HOOD - ISLWH**



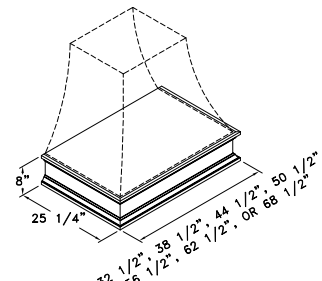
**MANTLE LEG STYLE A - MTLGA**



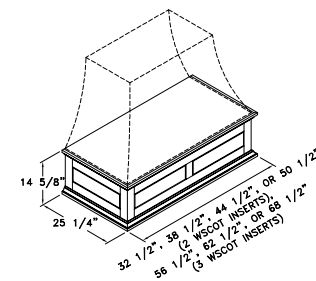
**WOOD HOOD PLATFORM STYLE A - WHPA**



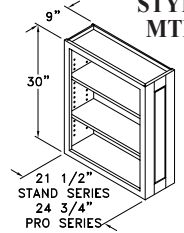
**WOOD HOOD PLATFORM STYLE B - WHPB**



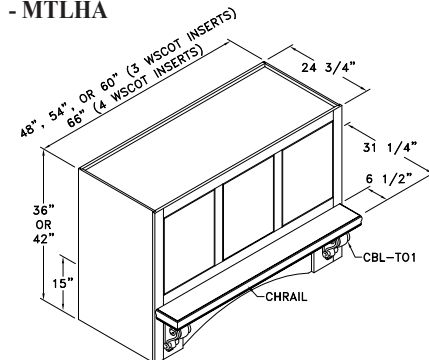
**WOOD HOOD PLATFORM STYLE C - WHPC**



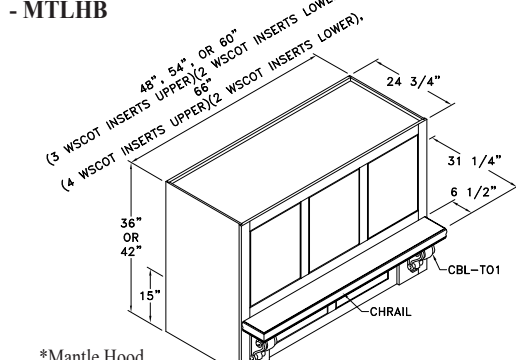
**MANTLE LEG STYLE B - MTLGB**



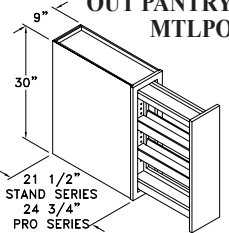
**\*MANTLE HOOD STYLE A - MTLHA**



**\*MANTLE HOOD STYLE B - MTLHB**



**MANTLE PULL OUT PANTRY - MTLPOP**



\*Mantle Hood Style A available with an option of wainscot or doors (wainscot shown).

\*Mantle Hood Style B available with wainscot only.