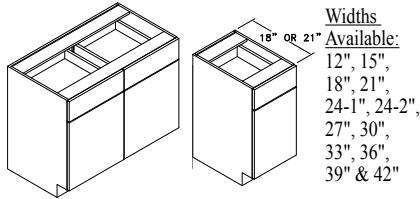


Vanity Cabinets **V30** Frameless

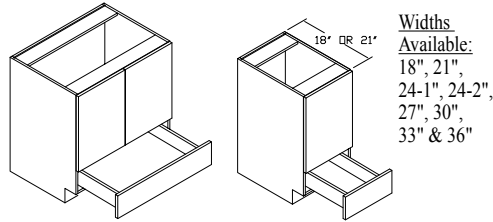
Code Width

- Standard Vanity depth is 21". 18" depth is also available. Please specify. e.g. V24-21 or V24-18.
- Standard Vanity Base height is 31½". 34½" high Vanities are also available. Please specify.
- 24"-2 and 27" Vanity Base cabinets have 2 doors and 1 drawer.

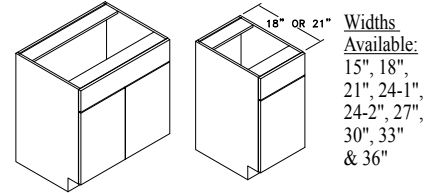
VANITY BASE - V



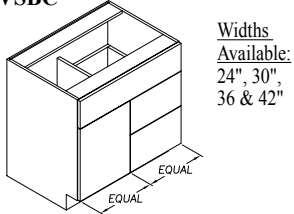
VANITY BASE REVERSE - VBR



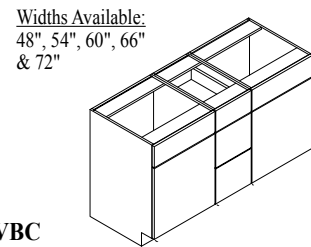
VANITY SINK BASE - VSB



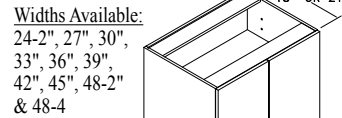
VANITY SINK BASE COMBO - VSBC



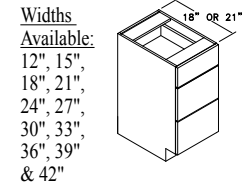
VANITY DOUBLE SINK BASE - VDSB



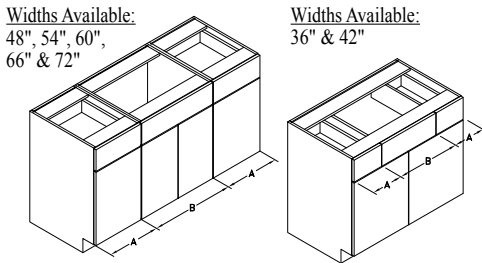
VANITY W/ FULL HIGH DOOR - VFH



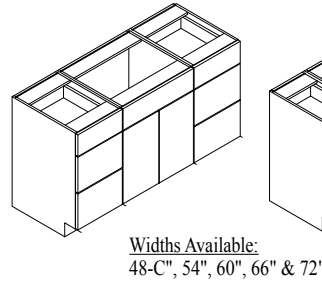
3 DRAWER VANITY - 3DV



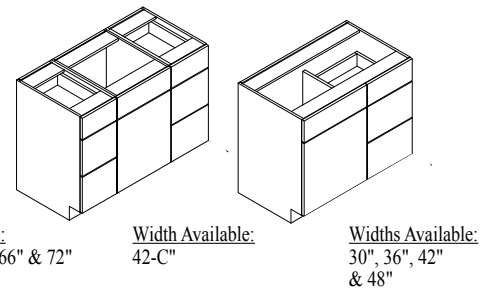
VANITY BASE COMBO - VBC



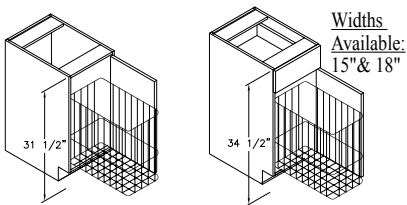
VANITY DOUBLE DRAWER COMBO - VDDC



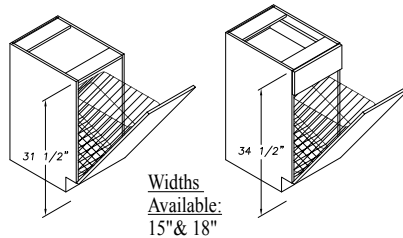
VANITY DRAWER COMBO - VDC



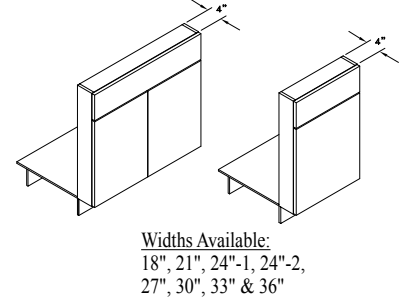
VANITY HAMPER - VH



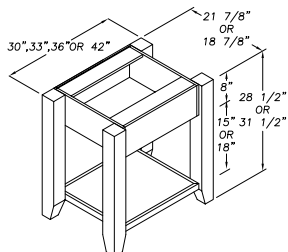
VANITY WIRE TIP-OUT HAMPER - VTOH



VANITY SINK FRONT - VSF



VESSEL SINK BASE - VES

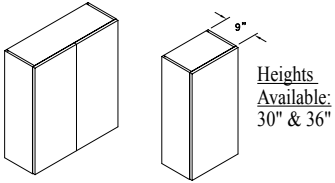


Vanity Cabinets V30

Code Width

- Standard Vanity depth is 21". 18" depth is also available. Please specify. e.g. V24-21 or V24-18.
- Standard Vanity Base height is 31½". 34½" high Vanities are also available. Please specify.
- 24"-2 and 27" Vanity Base cabinets have 2 doors and 1 drawer.

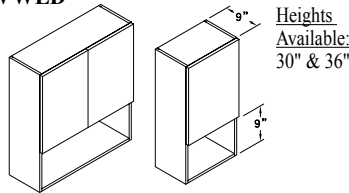
VANITY WALL - VW



Heights Available:
30" & 36"

Widths Available: 12", 15", 18", 21", 24-1", 24-2", 27", 30", 33" & 36"

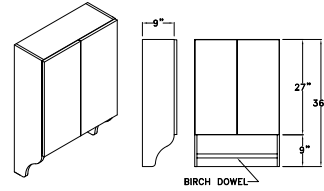
VANITY WALL LOWER DISPLAY - VWLD



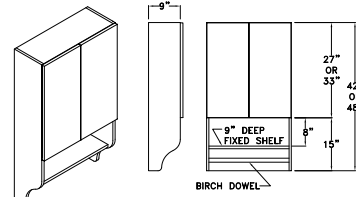
Heights Available:
30" & 36"

Widths Available:
21", 24-1", 24-2" & 27"

VANITY WALL W/ TOWEL BAR - VWTB

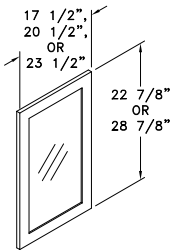


Heights Available: 36", 39", 42" & 48"

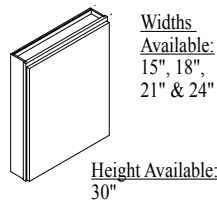


Widths Available:
24"-2, 27" & 30"

FRAMED MIRROR - FM

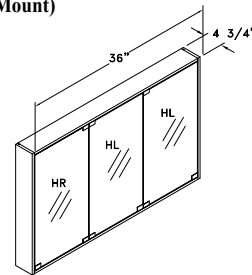


MEDICINE CABINET - MC

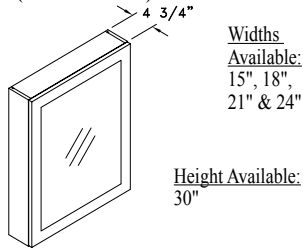


TRI-MIRROR MEDICINE CAB'T - 3MMC (Surface Mount)

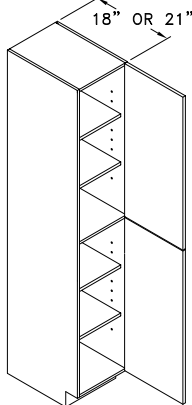
Height Available:
30"



MIRRORED MEDICINE CABINET - MMC (Surface Mount)



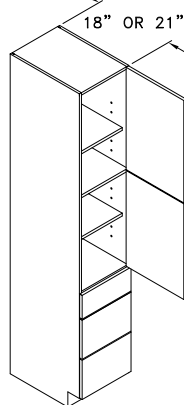
VANITY TALL LINEN - VT



Height Available:
84"

Widths Available:
15", 18", 21", 24-1", 24-2", 27", 30", 33" & 36"

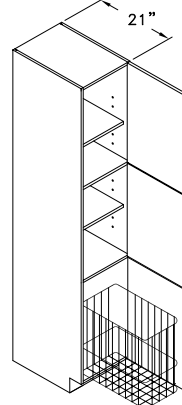
TALL LINEN W/ DRAWERS - VTD



Height Available:
84"

Widths Available:
15", 18", 21" & 24"-1

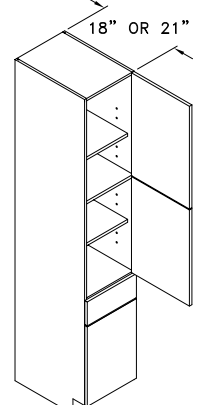
TALL LINEN W/ HAMPER - VTH



Height Available:
84"

Widths Available:
15" & 18"

TALL LINEN W/ 1 DRAWER - VT1D



Height Available:
84"

Widths Available:
15", 18", 21" & 24"-1