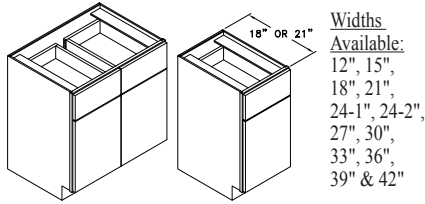


# Vanity Cabinets **V30**

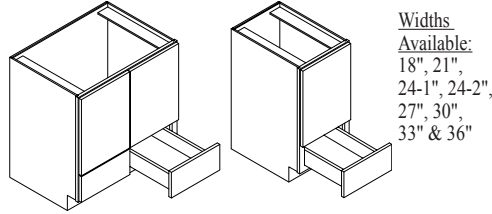
Code Width

- Standard Vanity depth is 21". 18" depth is also available. Please specify. i.e. V24-21 or V24-18.
- Standard Vanity Base height is 31½". 34½" high Vanities are also available. Please specify.
- 24"-2 and 27" Vanity Base cabinets have 2 doors and 1 drawer.

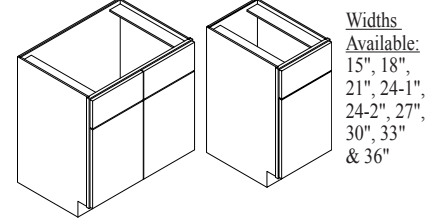
**VANITY BASE - V**



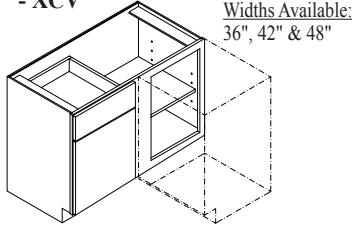
**VANITY BASE REVERSE - VBR**



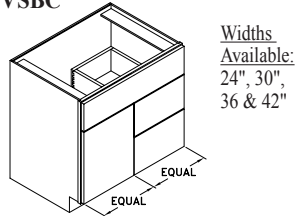
**VANITY SINK BASE - VSB**



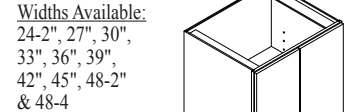
**BLIND CORNER VANITY - XCV**



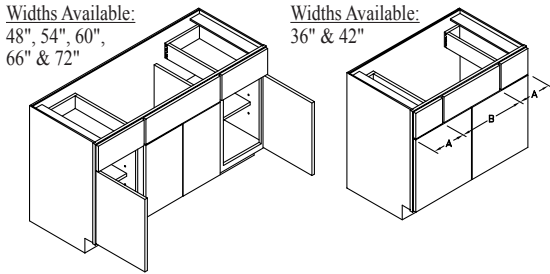
**VANITY SINK BASE COMBO - VSBC**



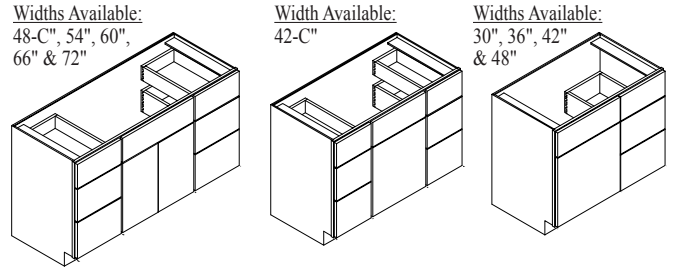
**VANITY W/ FULL HIGH DOOR - VFH**



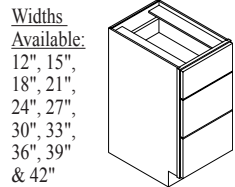
**VANITY BASE COMBO - VBC**



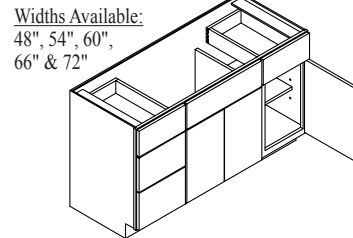
**VANITY DRAWER COMBO - VDC**



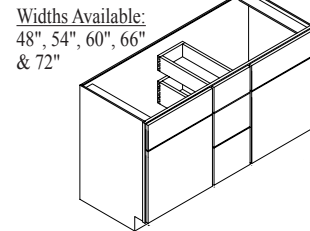
**3 DRAWER VANITY - 3DV**



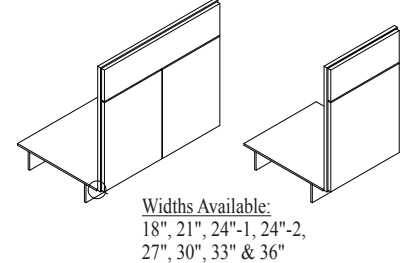
**VANITY BASE COMBO W/ DRAWERS - VBC3D**



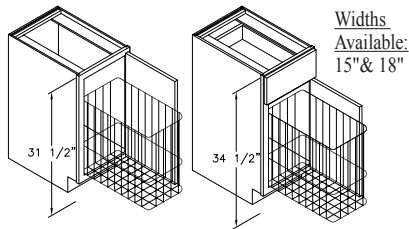
**VANITY DOUBLE SINK BASE - VDSB**



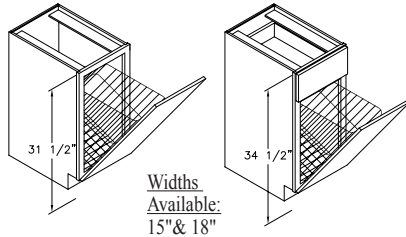
**VANITY SINK FRONT - VSF**



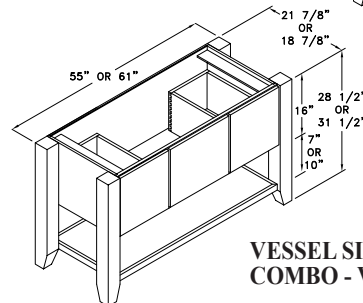
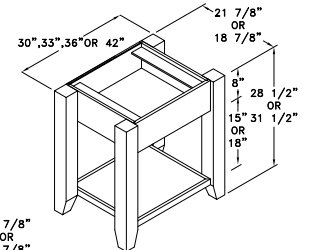
**VANITY HAMPER - VH**



**VANITY WIRE TIP-OUT HAMPER - VTOH**



**VESSEL SINK BASE - VES**



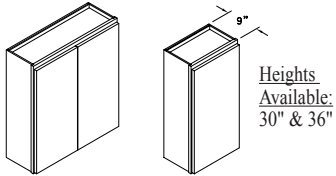
**VESSEL SINK BASE COMBO - VESC**

# Vanity Cabinets **V30**

Code Width

- Standard Vanity depth is 21". 18" depth is also available. Please specify. i.e. V24-21 or V24-18.
- Standard Vanity Base height is 31½". 34½" high Vanities are also available. Please specify.
- 24"-2 and 27" Vanity Base cabinets have 2 doors and 1 drawer.

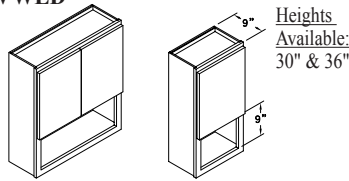
## VANITY WALL - VW



Heights Available: 30" & 36"

Widths Available: 12", 15", 18", 21", 24-1", 24-2", 27", 30", 33" & 36"

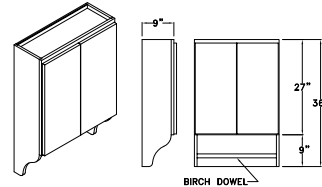
## VANITY WALL LOWER DISPLAY - VWLD



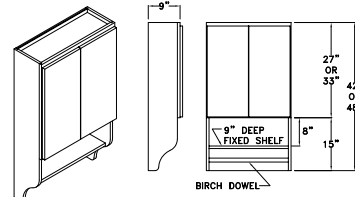
Heights Available: 30" & 36"

Widths Available: 21", 24-1", 24-2" & 27"

## VANITY WALL W/ TOWEL BAR - VWTB

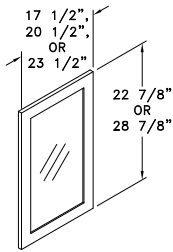


Heights Available: 36", 42" & 48"

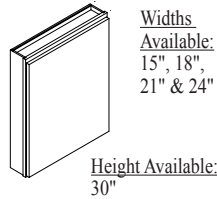


Widths Available: 24"-2, 27" & 30"

## FRAMED MIRROR - FM



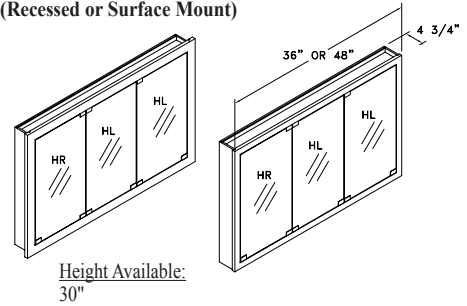
## MEDICINE CABINET - MC



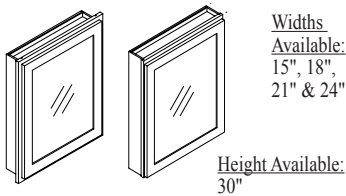
Widths Available: 15", 18", 21" & 24"

Height Available: 30"

## TRI-MIRROR MEDICINE CAB'T - 3MMC (Recessed or Surface Mount)



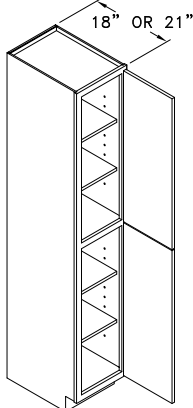
## MIRRORED MEDICINE CABINET - MMC (Recessed or Surface Mount)



Widths Available: 15", 18", 21" & 24"

Height Available: 30"

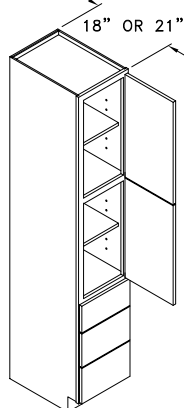
## VANITY TALL LINEN - VT



Height Available: 84"

Widths Available: 15", 18", 21", 24-1", 24-2", 27", 30", 33" & 36"

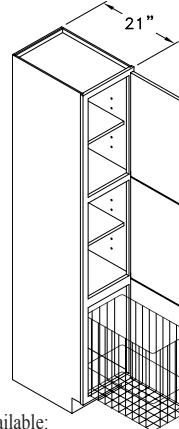
## TALL LINEN W/ DRAWERS - VTD



Height Available: 84"

Widths Available: 15", 18", 21" & 24"-1

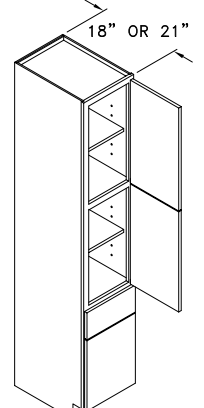
## TALL LINEN W/ HAMPER - VTH



Height Available: 84"

Widths Available: 15" & 18"

## TALL LINEN W/ 1 DRAWER - VT1D



Height Available: 84"

Widths Available: 15", 18", 21" & 24"-1