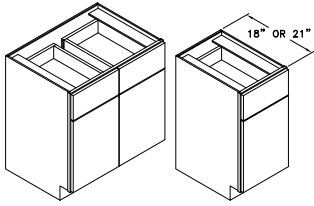


Vanity Cabinets **V30**

Code Width

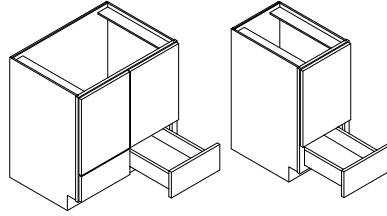
- Standard Vanity depth is 21". 18" depth is also available. Please specify. i.e. V24-21 or V24-18.
- Standard Vanity Base height is 31½". 34½" high Vanities are also available. Please specify.
- 24"-2 and 27" Vanity Base cabinets have 2 doors and 1 drawer.

VANITY BASE - V



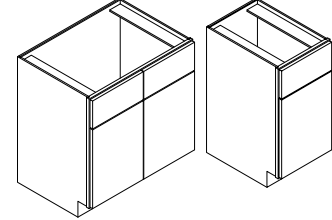
Widths Available:
12", 15",
18", 21",
24-1", 24-2",
27", 30",
33", 36",
39" & 42"

VANITY BASE REVERSE - VBR



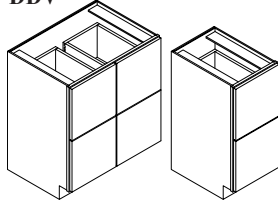
Widths Available:
18", 21",
24-1", 24-2",
27", 30",
33" & 36"

VANITY SINK BASE - VSB



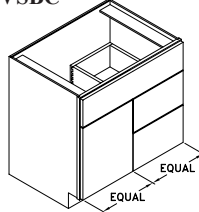
Widths Available:
15", 18",
21", 24-1",
24-2", 27",
30", 33",
& 36"

DEEP DRAWER VANITY - DDV



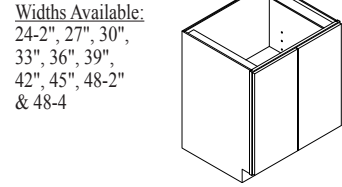
Widths Available:
18", 21",
24", 27",
30", 33",
36", 39",
& 42"

VANITY SINK BASE COMBO - VSBC



Widths Available:
24", 30",
36" & 42"

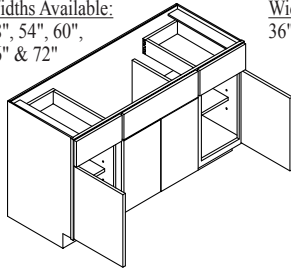
VANITY W/ FULL HIGH DOOR - VFH



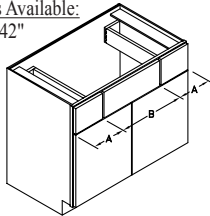
Widths Available:
24-2", 27", 30",
33", 36", 39",
42", 45", 48-2",
& 48-4

VANITY BASE COMBO - VBC

Widths Available:
48", 54", 60",
66" & 72"

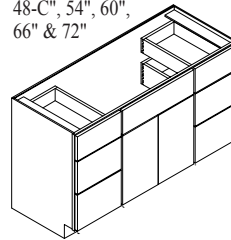


Widths Available:
36" & 42"

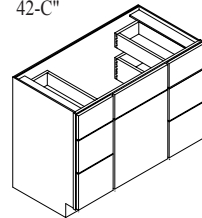


VANITY DRAWER COMBO - VDC

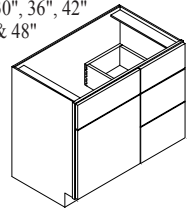
Widths Available:
48-C", 54", 60",
66" & 72"



Width Available:
42-C"

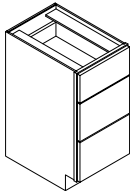


Widths Available:
30", 36", 42",
& 48"



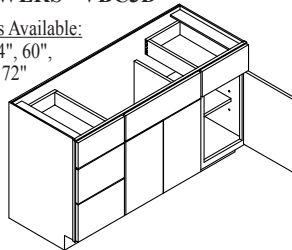
3 DRAWER VANITY - 3DV

Widths Available:
12", 15",
18", 21",
24", 27",
30", 33",
36", 39",
& 42"



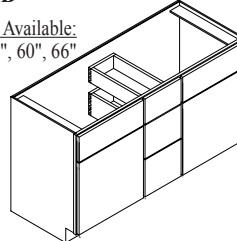
VANITY BASE COMBO W/ DRAWERS - VBC3D

Widths Available:
48", 54", 60",
66" & 72"



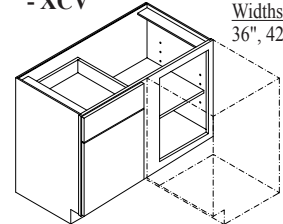
VANITY DOUBLE SINK BASE - VDSB

Widths Available:
48", 54", 60", 66",
& 72"



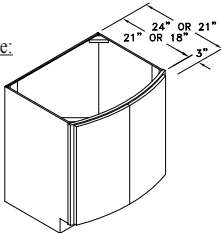
BLIND CORNER VANITY - XCV

Widths Available:
36", 42" & 48"

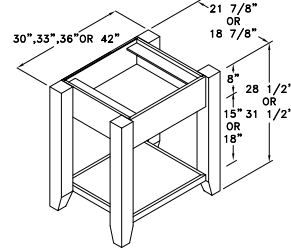


VANITY SINK BASE BOW FRONT - VSBBOW

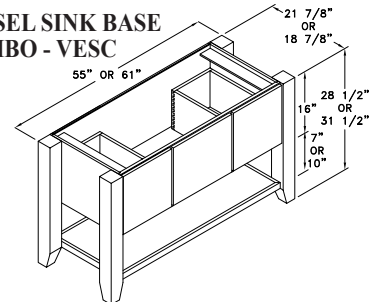
Widths Available:
30" & 36"



VESSEL SINK BASE - VES

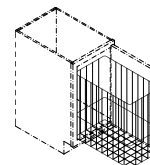


VESSEL SINK BASE COMBO - VESCB

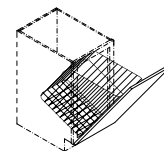


Vanity Accessories

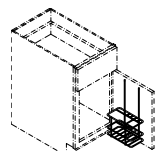
WIRE HAMPER - WH



WIRE TIP-OUT HAMPER - WTH



GROOMING RACK - VGR

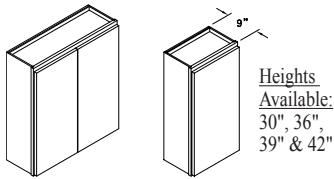


Vanity Cabinets **V30**

Code Width

- Standard Vanity depth is 21". 18" depth is also available. Please specify. i.e. V24-21 or V24-18.
- Standard Vanity Base height is 31½". 34½" high Vanities are also available. Please specify.
- 24"-2 and 27" Vanity Base cabinets have 2 doors and 1 drawer.

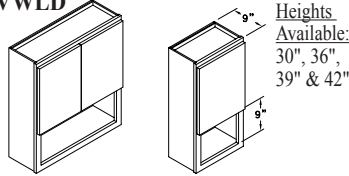
VANITY WALL - VW



Heights Available:
30", 36",
39" & 42"

Widths Available: 12", 15", 18", 21",
24-1", 24-2", 27", 30", 33" & 36"

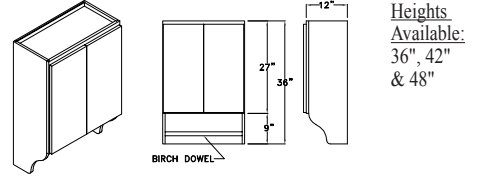
VANITY WALL LOWER DISPLAY - VWLD



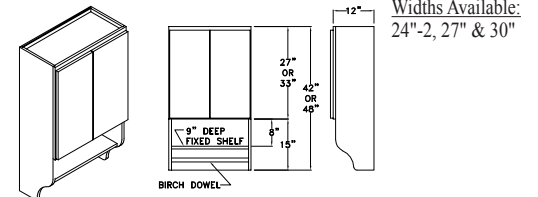
Heights Available:
30", 36",
39" & 42"

Widths Available:
21", 24-1", 24-2" & 27"

VANITY WALL W/ TOWEL BAR - VWTB

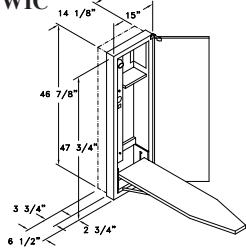


Heights Available:
36", 42"
& 48"

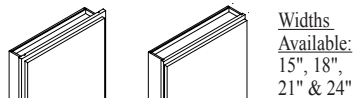


Widths Available:
24"-2, 27" & 30"

WALL IRONING CENTER - WIC



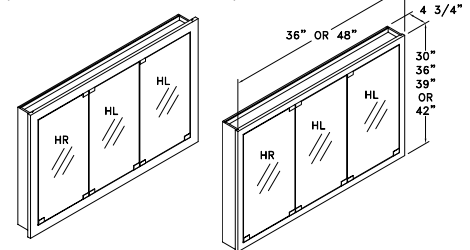
MEDICINE CABINET - MC (Recessed or Surface Mount)



Widths Available:
15", 18",
21" & 24"

Heights Available:
30", 36", 39" & 42"

TRI-MIRROR MEDICINE CAB'T - 3MMC (Recessed or Surface Mount)



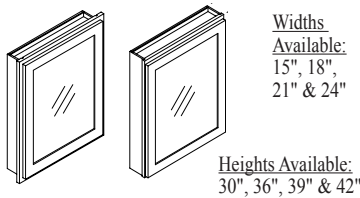
VANITY MIRROR CAB'T - VMC



Widths Available:
42" & 48"

Heights Available:
30", 36", 39" & 42"

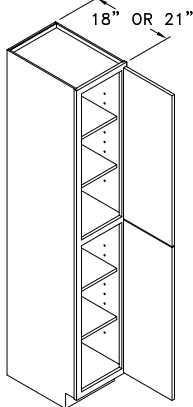
MIRRORED MEDICINE CABINET - MMC (Recessed or Surface Mount)



Widths Available:
15", 18",
21" & 24"

Heights Available:
30", 36", 39" & 42"

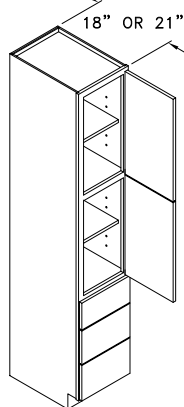
VANITY TALL LINEN - VT



Widths Available:
15", 18",
21", 24-1",
24-2", 27",
30", 33"
& 36"

Height Available:
84"

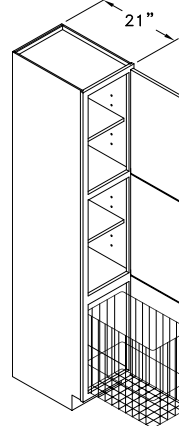
TALL LINEN W/ DRAWERS - VTD



Widths Available:
15", 18",
21" & 24"

Height Available:
84"

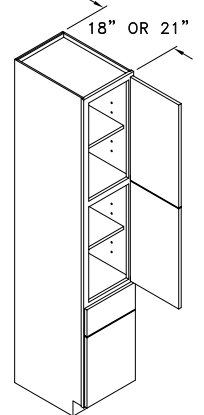
TALL LINEN W/ HAMPER - VTH



Widths Available:
15" & 18"

Height Available:
84"

TALL LINEN W/ 1 DRAWER - VT1D



Widths Available:
15", 18",
21" & 24"

Height Available:
84"